



HAWAII KAI TOWNE CENTER

Hawaii Kai Executive Plaza &
Hawaii Kai Corporate Plaza

333 Keahole Street
Honolulu, Hawaii 96825



PROPERTY DETAILS

LOCATION	333 Keahole Street Honolulu, Hawaii 96825
BASE RENT	Negotiable
CAM	
Hawaii Kai Executive Plaza:	\$1.74 PSF/Month* (estimated)
Hawaii Kai Corporate Plaza:	\$1.72 PSF/Month* (estimated)
PROMOTIONAL FUND (for ground floor only)	\$0.11 PSF/Month
TERM	Flexible
LAND AREA	20+ Acres

* Electricity and water charges separately metered

DEMOGRAPHICS (2016)

	1 Mile	3 Mile	5 Mile
Population	15,976	43,007	68,026
Average Household Income	\$134,053	\$138,983	\$138,007
Median Age	45.3 yrs	44.8 yrs	44.3 yrs
Bachelor Degree or Higher	54.7%	51.6%	48.5%

COLLIERS INTERNATIONAL
220 South King Street, Suite 1800
Honolulu, Hawaii 96813
www.colliers.com/hawaii



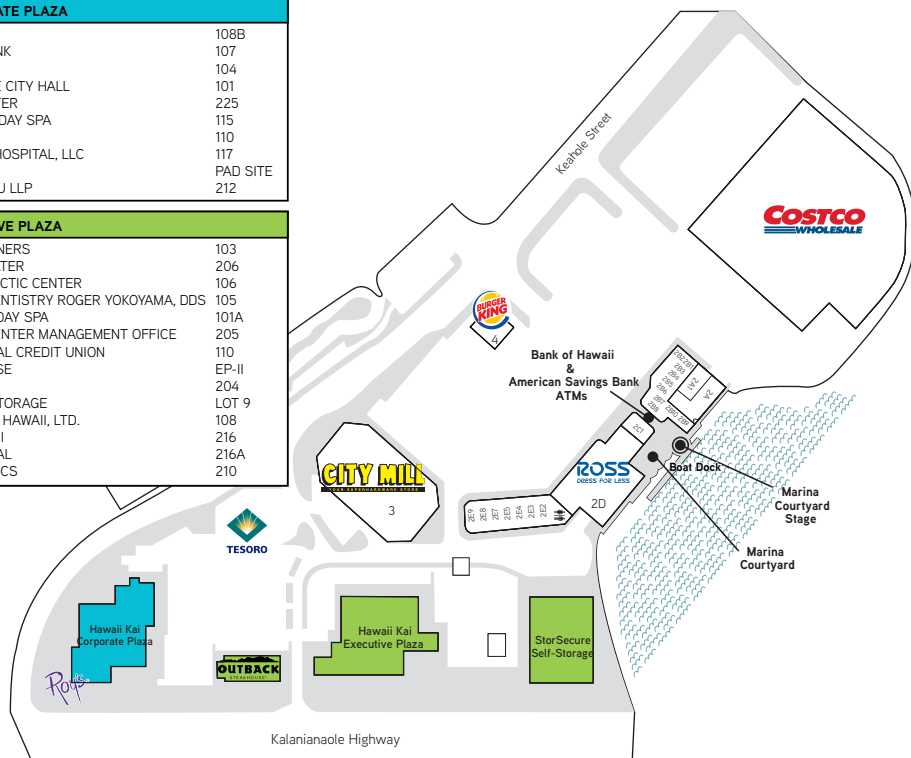


PROPERTY DESCRIPTION

- Hawaii Kai Towne Center is located in one of the most upscale areas in the State.
- Notable retailers and office users in the Center create for great synergy attributing to the constant flow of vehicular and foot traffic in the area.
- Outstanding manicured landscaping.
- Most office spaces offer open layouts, providing for space planning flexibility for any business.
- Great ocean and mountain views from the Center.
- Ample customer parking.
- Surrounded by many natural tourist attractions.
- 24/7 security services

HAWAII KAI CORPORATE PLAZA	
AINA IMAGERY	108B
CENTRAL PACIFIC BANK	107
COPY SHOP, INC.	104
HAWAII KAI SATELLITE CITY HALL	101
KING KALAKAUA CENTER	225
MONICA RA SALON & DAY SPA	115
ROY'S RESTAURANT	110
SURF PAWS ANIMAL HOSPITAL, LLC	117
TESORO	PAD SITE
VAN BUREN & SHIMIZU LLP	212

HAWAII KAI EXECUTIVE PLAZA	
CAESARS \$3.93 CLEANERS	103
HAWAII AMERICAN WATER	206
HAWAII KAI CHIROPRACTIC CENTER	106
HAWAII KAI FAMILY DENTISTRY ROGER YOKOYAMA, DDS	105
HAWAII KAI SALON & DAY SPA	101A
HAWAII KAI TOWNE CENTER MANAGEMENT OFFICE	205
HAWAII STATE FEDERAL CREDIT UNION	110
OUTBACK STEAKHOUSE	EP-II
STATE FARM	204
STORSECURE SELF-STORAGE	LOT 9
WAKEBOARD SCHOOL HAWAII, LTD.	108
PERIODONTICS HAWAII	216
HAWAII PACIFIC DENTAL	216A
COLLATERAL ANALYTICS	210



BRANDON BERA (S)

Vice President
 808.523.8309
brandon.bera@colliers.com

ALEXANDER PEACH (S)

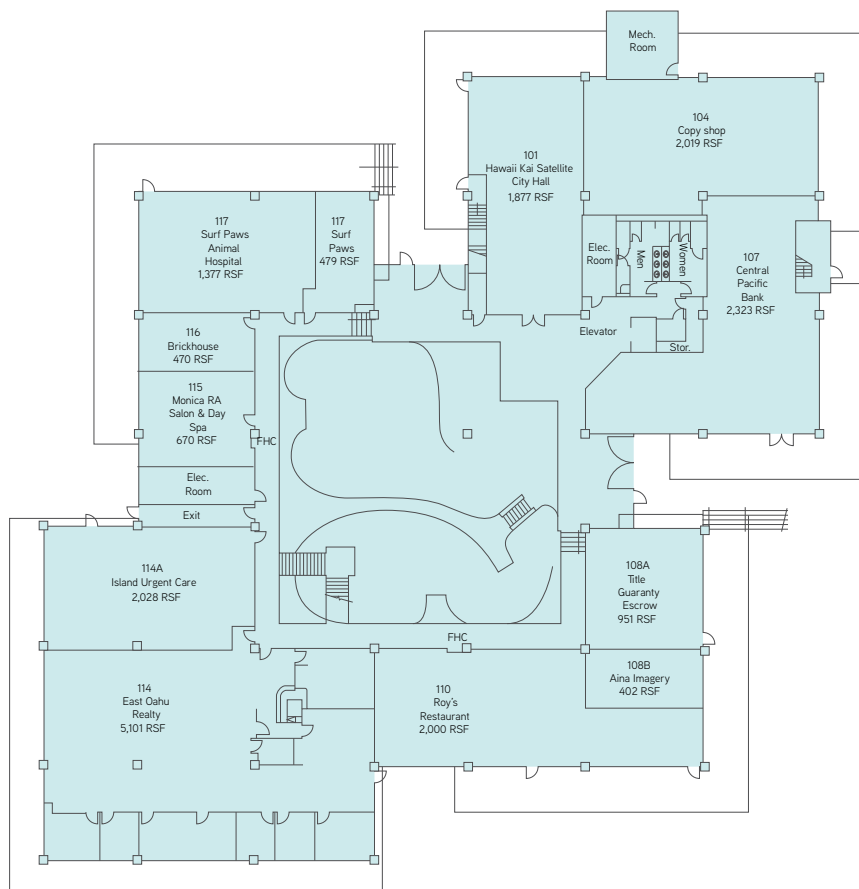
Associate
 808.349.6538
alexander.peach@colliers.com

COLLIERS INTERNATIONAL
 220 South King Street, Suite 1800
 Honolulu, Hawaii 96813
www.colliers.com/hawaii

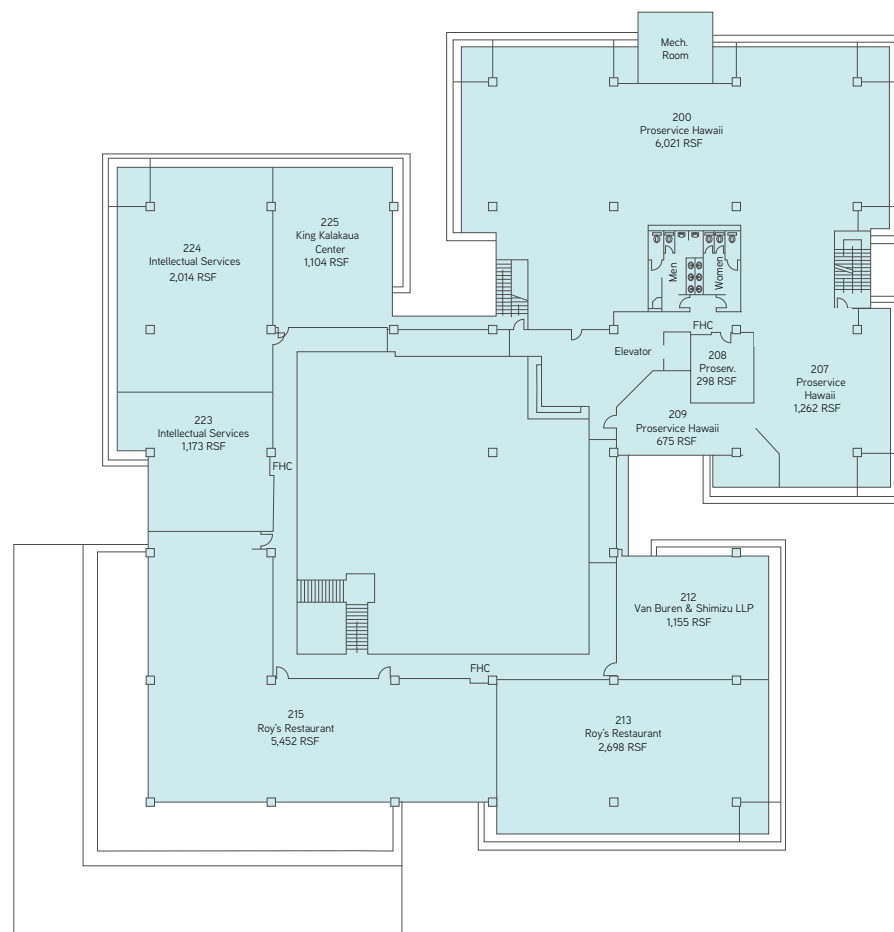


This document has been prepared by Colliers International for advertising and general information only. Colliers International makes no guarantees, representations or warranties of any kind, expressed or implied, regarding the information including, but not limited to, warranties of content, accuracy and reliability. Any interested party should undertake their own inquiries as to the accuracy of the information. Colliers International excludes unequivocally all inferred or implied terms, conditions and warranties arising out of this document and excludes all liability for loss and damages arising there from. This publication is the copyrighted property of Colliers International and/or its licensor(s). ©2017. All rights reserved.

HAWAII KAI CORPORATE PLAZA - SITE PLAN 1 OF 2

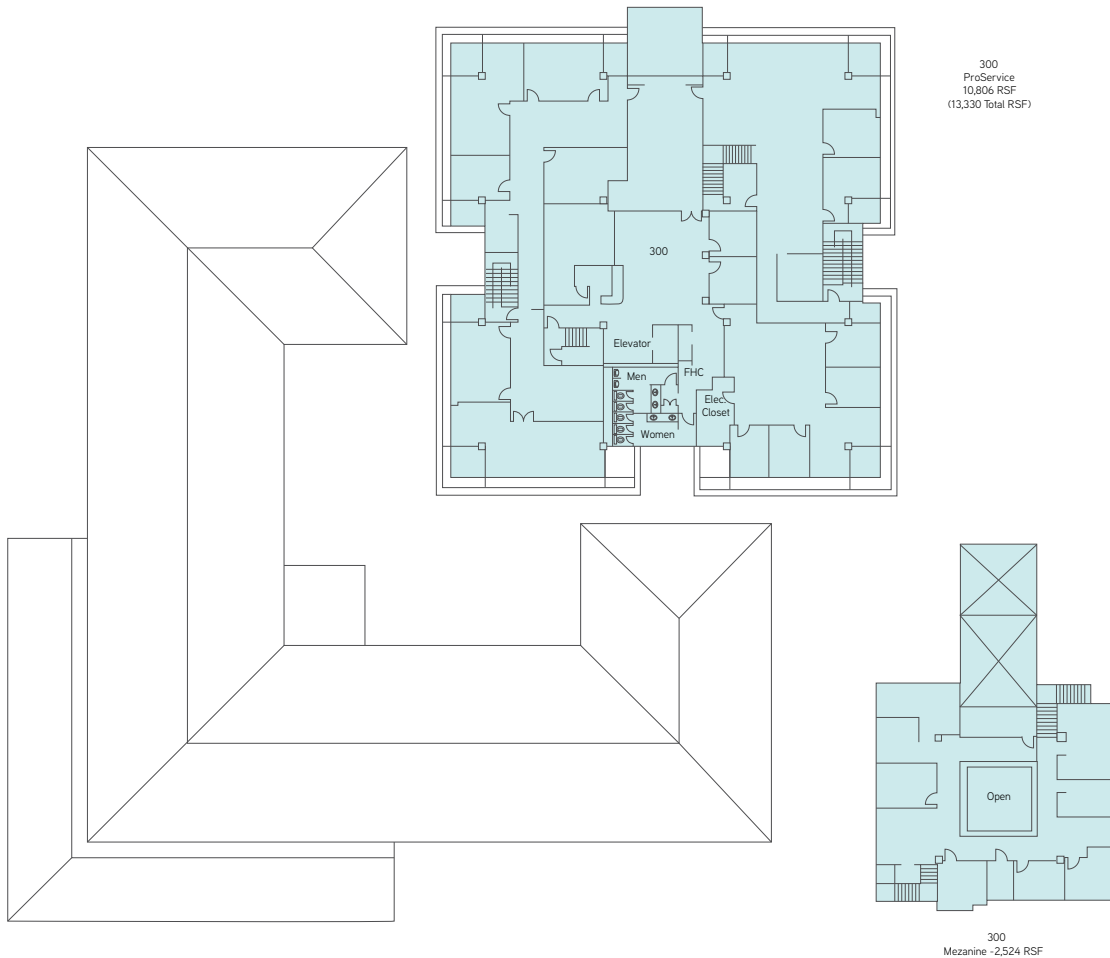


GROUND FLOOR PLAN



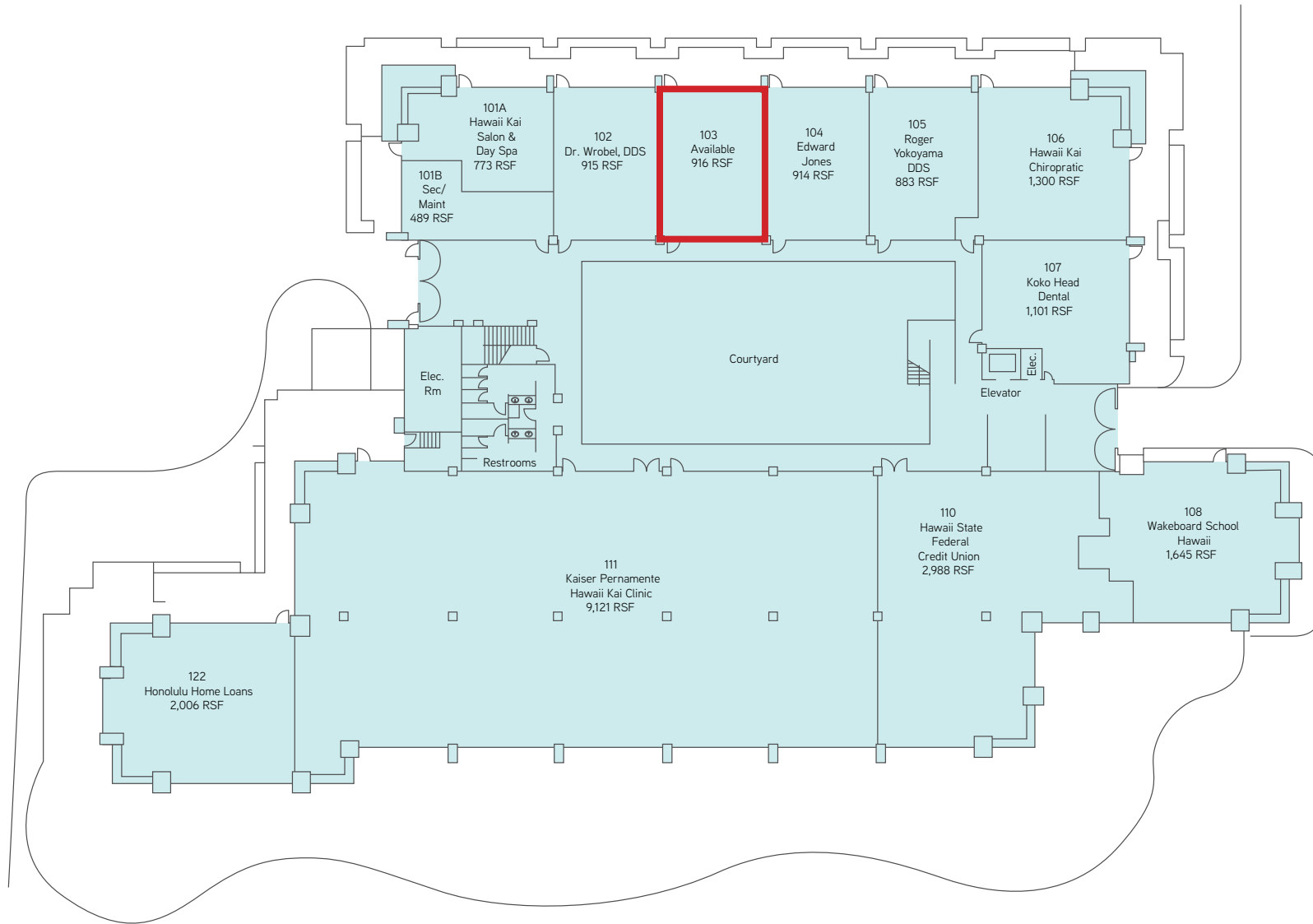
SECOND FLOOR PLAN

HAWAII KAI CORPORATE PLAZA - SITE PLAN 2 OF 2



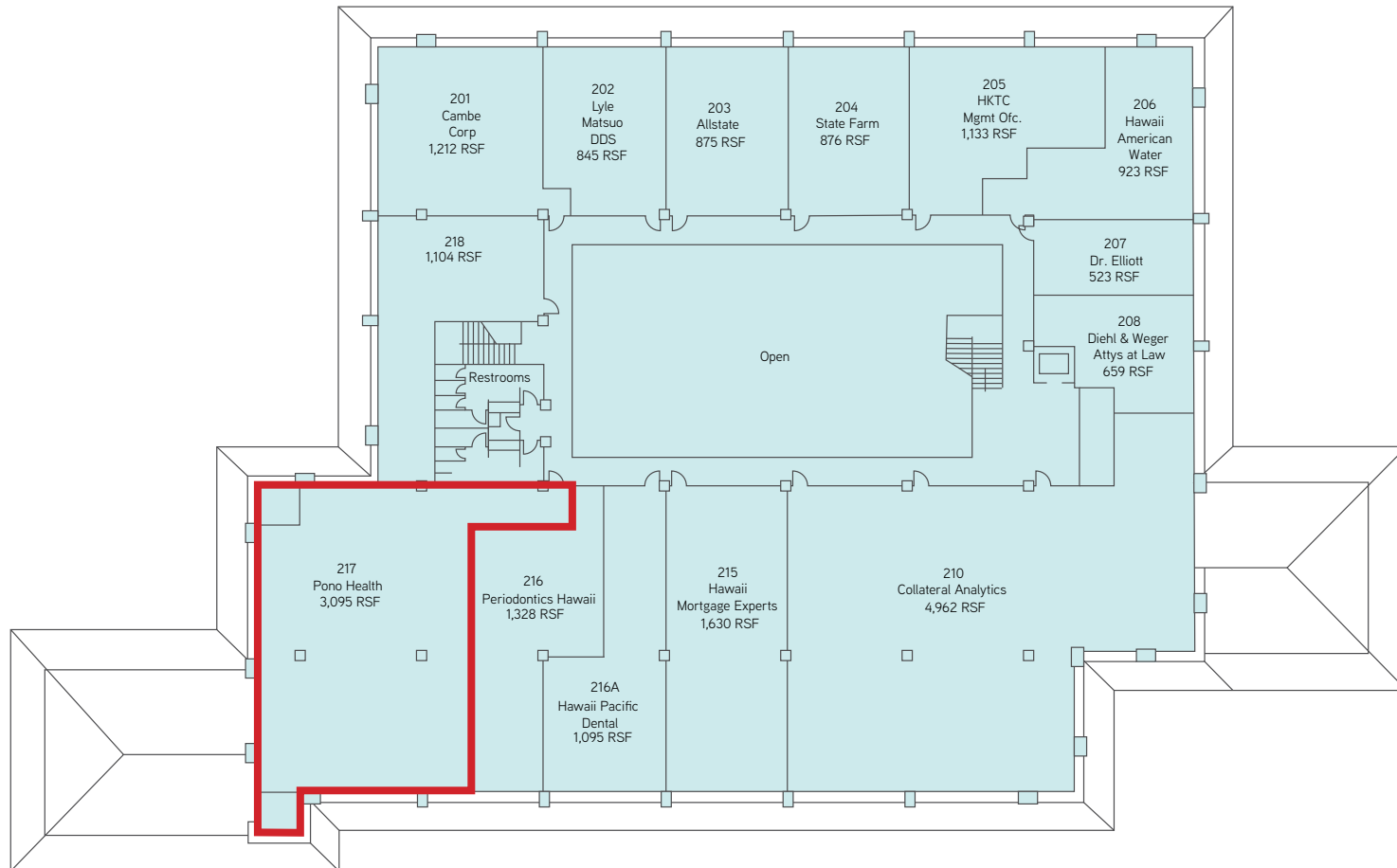
THIRD FLOOR PLAN

HAWAII KAI EXECUTIVE PLAZA - SITE PLAN 1 OF 2



GROUND FLOOR PLAN

HAWAII KAI EXECUTIVE PLAZA - SITE PLAN 2 OF 2



SECOND FLOOR PLAN